

VOTERS GUIDE



HELP! WHERE AM I GOING TO VOTE?

-- Via the computer, type in www.co.nueces.tx.us, and click on "Elections" in the red menu box at the top of the home page. Look for xxxxx, then type in your first and last name and your birthdate. You'll receive confirmation of your voter precinct number and its location. A map is also available.

Primary Election March 2, 2010

Early Voting Sub-Stations and Hours of Operation

**NUECES COUNTY
COURTHOUSE**
901 Leopard Street
Corpus Christi, Texas

**GREENWOOD SENIOR
CITIZENS CENTER**
4040 Greenwood Drive
Corpus Christi, Texas

**RONNIE H. POLSTON
COUNTY BUILDING**
10110 Compton Road
Corpus Christi, Texas

**JOHNNY S. CALDERON
COUNTY BUILDING**
710 E. Main Avenue
Robstown, Texas

HILLTOP COMMUNITY CENTER
11425 Leopard Street
Corpus Christi, Texas

FIRE STATION NO. 15
14202 Commodores Drive
Corpus Christi, Texas

**CORPUS CHRISTI AREA
COUNCIL FOR THE DEAF**
5151 McArdle Road
Corpus Christi, Texas

**NUECES COUNTY BISHOP
COMMUNITY CENTER**
102 W. Joyce Street
Bishop, Texas

**PORT ARANSAS
COMMUNITY CENTER**
408 N. Alister
Port Aransas, Texas

WHO CAN VOTE?

Voters who are registered 30 days ahead of the election date are eligible to vote in either the Democratic Party or Republican Party Primary Election on Tuesday, March 2, 2010. New **blue voter registration cards** were mailed to voters in early January. Any qualified voter can vote at any of the early voting substations. You will need your blue voter registration card, or if you do not have your card, you will need to present some form of identification such as:

- Driver License
- ID containing a photograph
- Current utility bill that shows the name and address of the voter
- Pre-printed check containing the voter's name
- A United States passport

Early voting at one of the nine Early Voting sites (listed at right) is scheduled from Feb. 16-28, 2010.

The hours of operation at the nine Early Voting Sub-Stations listed above are as follows:

Tuesday-Friday, February 16-19: 8:00 a.m. to 5:00 p.m.
Saturday, February 20: 7:00 a.m. to 7:00 p.m.
Sunday, February 21: 12 noon to 5:00 p.m.
Monday-Friday, February 22-26: 7:00 a.m. to 7:00 p.m.

In addition to the nine Early Voting Sub-Stations listed above, 55 Nueces County Mobile Early Voting sites are available at various locations throughout the county from Feb. 16-26. See Page 11 of this Voter Guide for the Mobile Voting Calendar or visit www.co.nueces.tx.us to view the calendar. If you need assistance or have questions, please contact the Nueces County Clerk's Office at 361-888-0676.

VOTER GUIDE CONTENTS

Page 2: US Congress, District 27
Page 3: State Rep. District 33;
Precinct Chairmen; GOP Ballot Propositions
Page 4: Judge, 148th District Court;
Nueces Judge
Page 5: District Clerk
Page 6: County Commissioner,
Precinct 2
Pages 7-9: County Commissioner
Precinct 4 and Justices of the
Peace
Page 9: Republican Party Chair
Page 10: Democratic Party Chair
Page 11: Page 12: Listing of
Candidates on Primary Ballot

The **League of Women Voters-Corpus Christi** is a nonpartisan, political organization that encourages informed and active participation in government, works to increase understanding of major public policy issues, and influences public policy through education and advocacy. Neither the League nor the Education Fund supports or opposes any political party or candidate. The Voters Guide contains factual information to help prepare citizens to cast an informed vote. The information in the Voters Guide was obtained by means of a questionnaire sent to candidates who filed by the January 3 deadline for places on the ballot. Candidates' replies are reprinted verbatim and are not edited for meaning, grammar, or spelling. Responses are cut at the word limit (//), and those who did not reply to the LWV-CC questionnaire are so noted.

U. S. Representative, District 27

Questions posed to candidates and their responses. /// indicates a cut due to word limit.

Describe your training and experience that qualify you for this office. (40 words)

What steps will you take to enhance communication with your constituents? (75 words)

Partisanship is stifling good governance. What can be done to ensure bipartisan dialogue in Congress? (75 words)

What more could be done to get people back to work? (75 words)



James Duerr
Republican

Board of Regent for Del Mar College, Vice Chairman of Leadership Corpus Christi, Nueces County Appraisal District (Proven Friend of the Tax Payer), BS - TAMU Ocean Engineer, Volunteer Center Board, City Committee for Persons with Disabilities.

I will open Congressional offices in all counties in my District. Staffed with local residents.

I have proven leadership as a Board Member of Del Mar College working with all members in a true nonpartisan manner. I will be the voice of all the people, not just one party.

We need a Congressman that will push for Clean Natural Gas as an integral part of our National Energy Policy. This will create thousands of jobs in Texas.



William Vaden
Republican

Over 18 and a United States citizen of Texas; 5-term Councilman and twice elected as Mayor of Ingleside; President and CEO of Maritime Company serving worldwide; US Combat Marine, Vietnam

Appoint a delegate in every community with direct contact with me to transmit to me their concerns and an answer within 48 hours. Set aside at least one hour a day to direct phone calls.

I pledge to serve the people, not the party. The U.S. House is the People's House and not the house of a Party. Vote what is good for America and its people and owe no allegiance to a Party.

Put Cafta and nafta on a level playing field, end strict regulations that stifle industry, national Tort Reform and end Capital Gains Tax for 2 years. Close loopholes that allow foreign capital investments without collecting taxes. Lower taxes and entice investments. Reinvest in American markets, end unfair foreign competition that strangles American companies. US government to buy American first.



Blake Farenthold
Republican
<http://www.blake.com>

I work in talk radio, own my own computer consulting company, and practiced law. These taught me how to communicate, negotiate, save money and solve problems (especially with technology). I also learned government is too big and burdensome on everyone.

I am a born communicator, having worked in radio since I was 16. I plan on being a guest on every radio and TV show that will have me. I've been an Internet pioneer since 1982, and will remain easily accessible by email, the web, Facebook, Twitter and whatever comes next. I am also pretty good on the phone, in person, and with a word processor and paper. My handwriting is, however, another matter.

Bipartisanship has been used as an excuse for a lot of conservatives not sticking to their core values. Conservatives seem to always give more than we get. I'll work with anyone with common sense solutions to problems, but as a conservative, I am unwilling to compromise on my core beliefs that government is too big, taxes are too high and complicated, individuals have rights, and that God and family are the foundations of society.

Businesses, not government, are the key to putting people back to work. We must simplify and lower taxes to make American companies more competitive. We should reduce government regulation and paperwork. We should also return common sense and reasonable verdicts to the tort law system. Finally, we must create a meaningful from welfare to work system.



Jessica Puente-Bradshaw
Republican
www.texansforjessica.com

My experience as a school teacher and as a realtor (entrepreneur) qualifies me in that I understand community needs but also understand how spending & taxes affects jobs.

I pledge to have offices in Brownsville and Corpus Christi. My office will always be open and I pledge to become part of the community thru living and being with the people. Building relationships.

Bipartisan is an issue when either side chooses to ignore the other or when our Congress doesn't listen to its constituents. Listening & doing what the people want will reduce bipartisanship.

1. Lower taxes on businesses
2. Reducing the need or perceived idea that the govt. is there to take up the slack
3. I pledge to work with knowledgeable individuals who know how to create sustainable businesses & companies.

State Representative, District 33

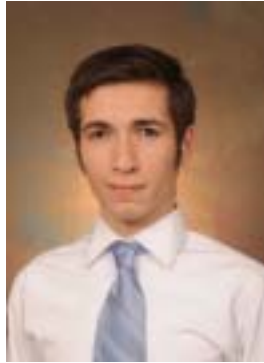
Questions posed to candidates and their responses. /// indicates a cut due to word limit.

What are your goals and/or priorities for this office? (40 words)

Do you support an independent redistricting commission? Explain. (75 words)

Requests for public information are being ignored and abused by city, county, and state agencies. How would you enforce public information laws and promote the citizens' right to know? (75 words)

What is the primary concern facing your district and what steps are needed to correct this concern? (75 words)



Nicholas Rodriguez
Republican

As a state representative, I will work every day to reduce the laws that exceed the protection of the individual's right to life, liberty, and property. The Texas government has been increasing its reach into our lives. My goal is to reverse these laws and make citizens more aware of their rights.

I do support an independent redistricting commission. I find it strongly offensive that individuals would try to district Texas so that it benefits political parties over the people of Texas.

There are few things more important than information. Every Texan has the right to know what is going on in their government; anyone who tries to prevent them from finding this information is wrong. I believe in an open government and an honest government. It is the job of the executive to enforce the laws, but as an elected official, I will do my best to call attention and demand appropriate action be taken.

We need more jobs. I believe reducing the tax burden would allow our economy to grow and allow for the creation of more jobs. By reducing fees, it will allow Texans to spend that money more appropriately than the state could. The government should stay out of the market and ease the cost to operate a business. Many of us are just trying to make it through the day; the government shouldn't make it harder.



Raul Torres
Republican

Job creation.

No. It does not allow for the voters to have input into where the lines are drawn in the redistricting process because their vote for an elected official will have no impact on the redistricting results. Independent commissions have no accountability to the voters.

The solution lies in the voters and their elected officials. We need to hold elected officials accountable to ensure that transparency in the public information is provided to the public on a timely basis and failure to do so will result in termination and/or not re-electing the official.

The creation of jobs. State government can do a lot to promote the right climate to create jobs by doing such things as reducing taxes, eliminating needless regulations, and reducing or holding the line on state spending.

PRECINCT CHAIRMEN TO BE ELECTED

DEMOCRATIC

Precinct Chairman No. 2

Laura Estrada
Rudy Peña

Precinct Chairman No. 4

Alex Nieto
Twila Mouttet

Precinct Chairman No. 8

Mary Rivera
Mike Creacy

Precinct Chairman No. 29

Richard Alonzo
Oscar Soliz

Precinct Chairman No. 44

Jim Barrientes
Carmen L. Durón

Precinct Chairman No. 74

Margaret R. Palacios
Manuel P. Peña

Precinct Chairman No. 78

Rose Marie Soto
Nick Enriquez

Precinct Chairman No. 79

Roy Solis
Esther Oliver

(Democratic, continued)

Precinct Chairman No. 81

Rowland Marcus Andrade
John D. Bell

Precinct Chairman No. 106

Patricia Pena-Noyola
Joseph Ramirez

Precinct Chairman No. 115

Isabel Noyola-Martin
Mike Rendon

Precinct Chairman No. 119

Mary J. Saenz
Leo Estrada

REPUBLICAN

Precinct Chairman No. 17

Jim Bixler
Darryl Smith

Precinct Chairman No. 18

Marie Speer
James S. Caldwell

Precinct Chairman No. 21

Betty Black-Evans
Todd Jones

(Republican, continued)

Precinct Chairman No. 40

Amy McLain
James Chrobocinski

Precinct Chairman No. 58

John Longoria
Kay Lund

Precinct Chairman No. 65

Roe Lear Machen
Vanessa Cahill Fratila

Precinct Chairman No. 91

Tom Knight
Cynthia Treviño-Eisenberg

Precinct Chairman No. 94

H.K. "Tripp" Batey III
Ron Garza

Precinct Chairman No. 107

John Wheeler
Jim Covington

Precinct Chairman No. 118

David A. Sharp
Paul Mann

Republican Party Primary 2010 Ballot Propositions

Ballot Proposition #1: Photo ID

The Texas legislature should make it a priority to protect the integrity of our election process by enacting legislation that requires voters to provide valid photo identification in order to cast a ballot in any and all elections conducted in the State of Texas.

Ballot Proposition #2: Controlling Government Growth

Every government body in Texas should be required to limit any annual increase in its budget and spending to the combined increase of population and inflation unless it first gets voter approval to exceed the allowed annual or in the case of an official emergency.

Ballot Proposition #3: Cutting Federal Income Taxes

In addition to aggressively eliminating irresponsible federal spending, Congress should empower American citizens to stimulate the economy by Congress cutting federal income taxes for all federal taxpayers, rather than spending hundreds of billions of dollars on so-called "federal economic stimulus".

Ballot Proposition #4: Public Acknowledgement of God

The use of the word "God", prayers, and the Ten Commandments should be allowed at public gatherings and public educational institutions, as well as be permitted on government buildings and property.

Judge, 148th District Court

Questions posed to candidates and their responses. /// indicates a cut due to word limit.

Describe the training and experience that qualify you for this office? (40 words)

What groups support your candidacy? (75 words)

As a new judge, what improvements do you expect to make in your court? (75 words)

When selecting a judge, what qualities should the public consider to be the most important? (75 words)



David Stith
Republican
www.electdavidjudge.com

I am Board Certified in Criminal Law and a former special prosecutor. I know how both sides of the legal system work. That helps me balance the rights of the victim and the accused to ensure justice is done.

I have a wide variety of support from citizens who are Republicans, Independents, and Democrats. All of my supporters want to see our district courts run in a fair and impartial manner. At this point, we have not yet sought any specific endorsements as it is too early in the campaign. However I look forward to working with all groups who want to see integrity brought back to the 148th District Court.

I have made three promises to the community during my campaign: That I will get to work early and stay till the job is done, that everyone who appears in my court—whether they are victims, defendants, witnesses, jurors or attorneys—will be treated with respect, and that every case assigned to my court will be handled in a responsible, fair and impartial manner.

When selecting a judge, voters should look for a candidate who is fair, who has knowledge of the law, and who acts with integrity. The rule of law should be rendered with a just and firm hand and judicial candidates should be committed to working hard to serve the public by administering justice equally to all who come before the court.



Guy Williams
Republican

USMC, Combat Vietnam Veteran, Purple Heart Medal, Special Agent NCIS, 22 years trial and appellate lawyer, worked my way thru high school, college & law school; active in the community and support youth at risk, senior citizens, and animal rescue and adoption.

Groups do not generally endorse candidates with opponents in the primary, but historically when running for office, I receive the endorsements of local and state law enforcement agencies and conservative groups.

Start court early and be on time; reduce wait time for jurors by requiring attorneys to have trial matters conducted a week before trial so jurors will not have to wait Monday mornings; implement bailiff sharing among the courts to reduce overtime pay by Sheriff's deputies and to keep deputies on the street; closely monitor plea bargain agreements to insure punishments fit the crime for violent and hardened criminals and for criminals committing property crimes//

Integrity and work ethic; judges should be at work on time, know the law, treat the public with courtesy, be fair and impartial and act as an independent referee to the parties without showing favoritism to attorneys.

Nueces County Judge

Questions posed to candidates and their responses. /// indicates a cut due to word limit.

Describe the training and experience that qualify you for this office. (40 words)

Describe the vision you have for the Richard M. Borchard Regional Fairgrounds. (75 words)

What is the county doing to attract new business and/or strengthen our local economy? (75 words)

What can Nueces County do to see that Oso Creek water quality and adjacent properties are protected? (75 words)



Clarissa Gonzalez
Democrat

My extensive experience in business leadership, knowledge of current events, and collaborative style of addressing issues have prepared me for this position. By virtue of my life experience, education and training, I can bring about positive changes to this county.

The fairgrounds have the potential to become a forward moving entity in this community. However, careful reflection needs to be made about where we have been and where we are going with these fairgrounds. Transparency is key so that the taxpayer may know how their dollars are being spent on this project. My vision includes unity between the City of Corpus Christi and the western side of Nueces County. After careful studies, we will then //

Through the Port and various industrial and entertainment venues the county has aspired to create more business. However, more must be done to improve upon the measures that have been taken to date. As your next Nueces County Judge, I assure the public that we will move forward with projects that also include attracting international business because of the importance of a now emerging global economy.

The importance of the public health of all citizens of Nueces County is paramount. Therefore, we must assure our taxpayers that all federal and state guidelines are followed. However, we must also make sure that no unnecessary barriers to industries exist, but corporations must remember that they are public citizens and stewards of public health. It will be my promise to the community that this county will balance public health concerns and the need for //



Because of space constraints, neither the listing of the Democratic nor Republican precinct voting sites appear in this Voters Guide. However, the information is readily available to the public via the internet. Access the Nueces County website at www.co.nueces.tx.us, then click on "Elections" in the red menu box at the top of the home page. Valuable election information is available, including the polling locations for both the Democratic and Republican party primary elections, the mobile voting calendar, sample ballots, and precinct information. On this website, voters can quickly find their precinct number simply by typing in their first and last name and their birthdate.

Nueces County Judge (continued)

Questions posed to candidates and their responses. /// indicates a cut due to word limit.

Describe the training and experience that qualify you for this office. (40 words)

Describe the vision you have for the Richard M. Borchard Regional Fairgrounds. (75 words)

What is the county doing to attract new business and/or strengthen our local economy? (75 words)

What can Nueces County do to see that Oso Creek water quality and adjacent properties are protected? (75 words)



**Juan R. Reyna
Democrat**

I have 9 years of higher education, including a BA, MS, and JD degrees. In addition, I have been practicing law in Texas since November 2000 and have years of experience representing and counseling governmental entities in South Texas.

The Richard Borchard Fairgrounds represent one of Nueces County's finest public treasures. To ensure its economic vitality, the County should form stronger alliances with the private sector in order to promote and attract new programs/shows. The County should further consider entering into discussions with neighboring counties to form a new Coastal Bend Annual Festival featuring the areas historical significance. Finally, the County should seek any Federal stimulus monies which may be available to complete the Fairgrounds.

We must be strong partners with the local business community and help foster an environment (tax incentives) wherein they can expand their payrolls. Better promote Nueces County (capital human resources, natural resources) in Texas and the US, in order to entice business to relocate/expand their operations here through tax incentives. Plan and take advantage of the Port of CC to promote international trade and to attract foreign capital to invest their equity here.

Nueces County must ensure that any additional development around the aforementioned area is done in such a manner that the impact to the environment is taking into consideration, including rain runoff/flooding issues. Nueces County must further ensure strict compliance of all Federal and State regulations regarding water quality and safety.

District Clerk

Questions posed to candidates and their responses. /// indicates a cut due to word limit.

Describe the training and experience that qualify you for this office. (40 words)

What is the primary role of the district clerk in county government? (75 words)

If elected, what do you hope to achieve as district clerk? (75 words)

What money-saving procedures could be established in the office? (75 words)



**Patsy Perez
Democrat**

My experience and training was acquired from my service as Nueces County's District Clerk for the last seven years, as a deputy district clerk for six years and as a court manager for ten years.

We work with the eight District Courts in Nueces County as the registrar and custodian of all documents that are generated as part of all civil and criminal actions. In addition, as one of only three counties in Texas our size or larger, we also handle the work for Nueces County's five County Courts. We also collect, disburse and report court costs, fines, fees and registry funds. And we handle the jury selection process.

I am currently the co-project manager for the implementation of the county's new six million dollar computer system. Although we plan on having the civil side of the system up and running in 2010, I would like to continue my involvement with the implementation of the system's criminal side in 2011. From there, I will have the tools in place to complete my goal to make the District Clerk's Office completely paperless.

Thru my first two terms, I have already established a number of cost-cutting policies. As a result, over the last six years my office has been under budget by an average of 5 percent per year. That's a total savings of over \$518,000. With the implementation of the new system and my push to go paperless, I expect the savings from using less supplies and storage to increase that amount substantially.



**Sylvia Cueva
Democrat**

I started in 1984 with the District Clerk in several departments, including Deputy Court Clerk in District Courts. No training was provided, so I learned on the job, by listening and asking questions until I was proficient in my job.

District Clerk responsibilities include collecting and disbursing court costs, fines and other fees that benefit 20 plus agencies at the state and local level, in addition to child support payments and probating wills. It also has the responsibility for gathering data and reporting to several states and local agencies such as the County Auditor, County Treasurer, Bureau of Vital Statistics, Dept. of Public Safety, Supreme Court of Texas, and Attorney General.

My goals are to have citations for service ready for pick-up within 2 days, which will decrease time in several departments. I would have a log book to track in and out going service so clerks would not have to research back logs. Another goal would be to have documents requiring "no money transactions" to be processed immediately. I would also compile a complete training manual so all clerks are cross-trained in different positions.

In order to save money in the District Clerks Office, it has to be run in an efficient manner. Efficiency is what makes NO overtime. Clerks that are knowledgeable in their duties will save time not only in the department, but in the courts and other services provided by the District Clerks Office. All District Clerks departments should be open during the lunch hour so the public could come to pay fines or fees.

Nueces County Commissioner, Precinct 2

Questions posed to candidates and their responses. /// indicates a cut due to word limit.

Describe the training and experience that qualify you for this office. (40 words)

Describe the vision you have for the Richard M. Borchard Regional Fairgrounds. (75 words)

What is the county doing to attract new business and/or strengthen our local economy? (75 words)

What can Nueces County do to see that Oso Creek water quality and adjacent properties are protected? (75 words)



Gloria P. Caceres
Democrat

As Elections Administrator for the Nueces County Democratic Party I managed several elections, including complex budgeting and election management. I've also managed a legislative office with state and county officials to address multiple issues impacting our community.

The facility requires enthusiasm and renewed support for enduring success. Already it has the infrastructure to make it a prime gathering place for our community. Improved promotion of the venue would increase popularity for this community asset. My long term goals would include the completion of the outlet mall project and securing other revenue-generating attractions.

Nueces County must work closely with the City of Corpus Christi and the Corpus Christi Regional Economic Development Center to attract new businesses and keep existing companies in the area. My goal is to encourage our already diverse mix of industry and to promote new opportunities through the use of tax abatements and incentives. I would also advocate partnerships with educational institutions to train our workforce and boost our region's economic growth.

A healthy Oso Creek filters and cleans the water that flows into the bay. Nueces County has limited authority over Oso Creek, which is regulated by numerous local, state and federal agencies. Nueces County must work closely with property owners, the Texas Commission on Environmental Quality, the Army Corps of Engineers, the General Land Office and the Coastal Bend Bays and Estuaries Program to protect Oso Creek. Collaboration is essential for protecting Oso Creek.



Joe A. Gonzalez
Democrat

As a J.P. Judge for ten years, I helped troubled youth improve their lives. Being a commissioner is more than numbers and budgets, its about making a positive impact on the lives of our constituents: worked with budgets from 130,000 to two-million-local, state & federal.

My vision is to stop wasteful spending on county projects that do not bring in revenue. The fairgrounds started out as a noble project, but the expansion and cost got out of hand. Because the county is losing millions, my vision is to focus on using those dollars for Pct. 2 to improve roads, clinics, libraries, senior, veteran centers with special emphasis on the GED college scholarship program, Reducing the dropout epidemic, graffiti. Target the intercity, colonias //

Unfortunately, the county is not enough. So often, we lose out to other areas like the Rio Grande Valley or Laredo and South Padre because their political leaders work together for the common good. We need to keep marketing our city as a great place to raise a family and as a place who welcomes new business through tax incentive. If we are to grow & prosper, we as leaders need to work together.

We know that the state and federal government must coordinate and set standards in order to maintain air and water quality to protect families; however, the county must enforce the standards with ongoing code enforcement. The county can provide incentives to people that come forward and report violation and voice their concerns. We need multiple townhall meetings, radio and TV media bliss to disseminate this vital information.



Jesse Noyola
Democrat

I served 6 years as your Corpus Christi City Councilman representing District 3. As your Councilman, I acquired extensive experience in budgeting, public safety, economic development, policy making, zoning and planning, parks and recreation, drainage, roads, transportation, and land use.

My vision is to improve and increase the future Fairgrounds' events and activities for the entire region creating a Mecca for world class events. These facilities have been a huge improvement for the youth and families involved in the livestock show other events. The location of this facility and Highway 77 serve as a vital organ to the proposed Outlet Mall which will create an economic boost for Nueces County.

Historically, the county has contributed to the Economic Development Corporation, Chambers of Commerce, given tax abatements, and incentives to new businesses, The Port of Corpus Christi, Local Redevelopment Authority, RTA and Metropolitan Planning Organization. I will be a strong voice and a "hands on" active economic development booster and team player. My number one priority is JOBS, JOBS, JOBS!

We currently have Sanitary treatment facilities in place to protect the water quality. However, we can improve by creating ways to contain the drainage catching any runoff by utilizing retention ponds. We must also monitor and increase the testing of our current plants and the surrounding land to be sure that it is not originating at those facilities and meets the required standards.

The League of Women Voters has a 24/7 answering service that is available by calling 361-880-6501. If you are interested in membership (LWV is open to both men and women!), or if you have questions, please don't hesitate to call us!



The League of Women Voters-Texas (LWVTX), through its Educational Fund, will publish a Voters Guide that highlights information about candidates seeking state-wide office on the Democratic and Republican Party primary ballot. Visit www.lwvtexas.org and click on "Voter Information: Elections and Voters Guide." You may view the Guide on-line or download a copy.

Nueces County Commissioner, Precinct 4

Questions posed to candidates and their responses. /// indicates a cut due to word limit.

Describe the training and experience that qualify you for this office. (40 words)

Describe the vision you have for the Richard M. Borchard Regional Fairgrounds. (75 words)

What is the county doing to attract new business and/or strengthen our local economy? (75 words)

What can Nueces County do to see that Oso Creek water quality and adjacent properties are protected? (75 words)



Chuck Cazalas
Republican

Political Science. Masters Degree Organizational Psychology; advanced training, 120 continuing education hours in county/state government; trustee for State Pension Plan; financial market investor; elected office Lower Nueces River Water Supply District elected office; County Commissioner Precinct 4 for past seven years.

The Nueces County Fairgrounds is an educational tool for our youth that preserves and teaches Texas heritage and culture. It has facilities that serve many organizations at an affordable price. Additionally it serves as the county's disaster coordination site for Nueces County. When the Outlet Mall comes to fruition, the total complex area will generate significant revenues that will broaden the tax base.

The county has lowered its tax rate by 15% since I have been in office which helps the private sector to compete and create jobs. Additionally, the county revised its Tax Abatement Policy to assist companies wanting to come here during these troubling economic times.

Nueces County entered into an agreement with an engineering firm on August 2, 2006 for work related to a Master Drainage Plan. The plan has begun to ID the various basins and streams for runoff and hydraulic models to be used for solutions, alternatives and costs associated with maintaining a healthy Oso Creek Watershed.



Joe McComb
Republican

Experienced as county commissioner (1995-2002) no OJT is required. I have a Special Certification in the Curriculum 2000 Program State Association. I am owner of a family-owned business understands the need to manage financial matters.

Implement a better marketing plan. At the last Junior Livestock Show the facility was filled to capacity. Complete the work that is currently under contract and have a good maintenance plan to protect the investment.

The county must continue to be aggressive in business development, keep our incentive package current and continue to work with the CCREDC and the cities in Nueces County. Demonstrate fiscal responsibility with tax dollars and reduce the staggering amount of debt (\$185,069,602 debt and interest) that has accumulated over the last six years.

Enforce current litter laws and work with the TECQ on non-point source pollution. Complete the county's stormwater master plan and work with the City of Corpus Christi to control pollutants from runoff. Continue the Colonia initiative.

Justice of the Peace, Precinct 1, Place 1

Questions posed to candidates and their responses. /// indicates a cut due to word limit.

Describe the training and experience that qualify you for this office. (40 words)

What role does the justice of the peace play in our community? (75 words)

Describe your precinct boundaries and state if there are any unique problems in your precinct that need to be addressed. (75 words)

What are your goals and priorities? (75 words)



Ray Madrigal
Democrat

Bachelors of Science in Criminal Justice, Associates Degree in legal Assisting, Mediation, Maturity, Business Experience, Leadership Corpus Christi Class 6, Military Training, Dale Carnegie Training, LULAC, American Legion, American GI Forum, Democrat Party.

The Justice is an elected official that is responsible for keeping peace in our community and making sure that justice is dispensed fairly to all that go before the court.

The present boundaries are Everhart west to the five point area, then southside of SPID to Ayers to Ocean Drive; Ocean Drive to end of North Beach, than West Callahan just past Corridor 69.

First is to get elected and then to address the long lines of people that are waiting to be heard, so that those parents can go back to work and earn a living to support their families and mainly return those children back to the classroom where they belong so that can get an education and avoid getting into situations that they might later regret.



Nick Adame
Democrat

My community involvement spans over several years. I am currently serving as an At-Large Regent for Del Mar College. Additionally, I have served over 5 years as LULAC Council No. 1 President; a position which has given me a front row seat in the fight for civil and human justice //

The role is very important one in that it is the court where many of the community's legal issues are first addressed. From issues related to landlord/tenant to issuing protective orders for domestic or other situations. Paraphrasing a popular television show, it is the people's court and should be accessible to all.

Justice of the Peace 1 is the largest JP precinct in Nueces County in terms of population. Continuing to attract attention is the high rate of school truancy and dropouts. Although, much has been done in this area, we must make sure young people in our community understand the importance of an education and how it will save us tax dollars in their later adulthood providing a better standard of living throughout their lives.

To continue and work toward solutions to the problems faced by the community in JP 1 by working with agencies and community members who are proficient in our problems and needs. 50 to 60% of the JP cases involve trancies. I will be proactive in moving cases in a timely manner as other aspect of Magisterial and Administrative Duties the office needs to be address. I will provide services to our community as best as I //

Justice of the Peace, Precinct 1, Place 1

Questions posed to candidates and their responses. /// indicates a cut due to word limit.

Describe the training and experience that qualify you for this office. (40 words)

What role does the justice of the peace play in our community? (75 words)

Describe your precinct boundaries and state if there are any unique problems in your precinct that need to be addressed. (75 words)

What are your goals and priorities? (75 words)



Joe Benavides
Democrat

Retired Military Administrator (22 yrs.), AS in Business Administration, BS in Management, and Human Resource. CCISD Teacher/Court Liaison aimed at assisting At-Risk Students to attain their education. Community involved for most of my life with seniors, youths, and veterans.

JP have a vital role in the delivery of court services to their communities. As an officer of the court, a JP has a responsibility to perform specific judicial duties. They are; issuing court summons and warrants, conducting mediations, presiding in docket court, conducting hearings and dealing with truancy, small claims not to exceed \$10,000, landlord/tenant disputes, conducting marriages and handle traffic citations. Common sense, fairness, and ability to listen to all sides.

The drop-out epidemic from our local high schools. It will be essential that we not lose sight of our public schools. My sole efforts are to align myself with local leadership and continue my passion to combat the drop-out epidemic in our precinct, by fundamentally committing to creating a secondary educational system (GED) program. That the norm will be that all at-risk youth have an ability to be an educational success in their families and our community.

Thru strict adherence to the laws for habitual truancy, create a system that will account for all students to be in school. To respectfully recommend to my superiors if elected and advocate for (1) a dedicated case worker, and (2) IAW section 25.094, T.E.C the use of monitor ankle bracelets, (3) Support a dedicated JP Juvenile/Truancy Court for JP1-1 of Nueces to be consistent in imposing equal sanctions to all youths.



Bea Molina
Democrat

I have a degree in management with 19 years experience in the Justice Court System, 15 as Court Manager for Judge Henry Santana. An Instructor for Texas Justice Court Training Center, I teach Court Administration to Court Managers throughout Texas.

The Justice of the Peace Court is the People's court. It is the court with the lowest level of jurisdiction, thus is the court that most people utilize. The Justice of the Peace should provide accessible, fair, courteous, and efficient service; this should be the focus of the Judge and court personnel. Judges and staff have a public duty to uphold high integrity in the court system.

The JP boundaries (jurisdiction) are Criminal-Class C Misdemeanors and Justice Court/ Small Claims up to \$10,000. Precinct 1 is inundated with busy dockets and backlogged cases—I see this as an opportunity. As judge for Pct 1 Pl 1, I will partner with Judge Santana to relieve the burdens on defendants in both courts from waiting prolonged amounts of time, creating a more efficient and effective court for our taxpayers.

My goal is a promise to my constituents, to be a self-sufficient solvent court. My first priority is to bond with my staff and create an atmosphere of trust and respect. Next, I will take my experience and commended status and apply my method of running an efficient court to the JP 1-1 court. I will implement the best policies and procedures established by the Nueces County Auditor.



Larry Young
Democrat

Management of personnel and budget in addition to 30 years as a police officer performing in many capacities. As a Hostage and Crisis Negotiator I was successful where anything less may have resulted in death. As a mediator I brought resolution to parties //

The Justice of the Peace is the People's Judge that most citizens will visit when interacting with the law in minor criminal issues or civil lawsuits. The Justice has the unique responsibility of determining probable cause for arrest warrants, search warrants to conducting property hearings, towing hearings, drivers license hearings, disposition of seized animals and stolen property. Justice has the authority to perform marriage ceremonies, impose and collect fines, collect restitution and issue warrants. //

I would be Place 1 of three Justice's in Justice Court in precinct One. Precinct One covers from Everhart Rd. west toward Driscoll, Texas and towards Robstown. It goes north to SPID to Ayers down to Baldwin then around to S. Staples to Chamberlain and through neighborhoods to Ocean Dr. Everything west and north of those boundaries covering out past Callalen area and everything in between. The unique thing about my precinct is (1) Broad range of economic //

My first goal is to evaluate the office of Justice of the Peace as it is today. for efficiency, manpower, training etc. My second goal is to establish procedures to reduce and monitor the truancy problem while evaluating the court ordered GED program. 3.) I want to study the possibility of having the court open for certain business on Saturday, making it more accessible for working residents who are required to do business with the court.

SPECIAL NOTE TO VOTERS:
SHOULD A RUN-OFF ELECTION BE REQUIRED BY EITHER PARTY, THE ELECTION WOULD BE HELD ON TUESDAY, APRIL 13, 2010. EARLY VOTING FOR THE RUN-OFF WOULD BE HELD APRIL 5-9, 2010. TO CONFIRM PRECINCT VOTING LOCATIONS FOR THE RUN-OFF ELECTION, VISIT THE NUECES COUNTY WEBSITE AT: www.co.nueces.tx.us

Justice of the Peace, Precinct 3

Two Democratic Party candidates are seeking election as Justice of the Peace, Precinct 3. They are **Adolfo G. Contreras** and **Roberto R. "Beto" Gutierrez**. However, no response to the League questionnaire was received by either candidate.

Justice of the Peace, Precinct 2, Place 2

Questions posed to candidates and their responses. /// indicates a cut due to word limit.

Describe the training and experience that qualify you for this office. (40 words)

What role does the justice of the peace play in our community? (75 words)

Describe your precinct boundaries and state if there are any unique problems in your precinct that need to be addressed. (75 words)

What are your goals and priorities? (75 words)



Jim Rector
Republican

I am a certified peace officer with 11 years experience as a police officer, deputy constable, and Chief Deputy. I hold a bachelors and a masters degree and am retired as a teacher/coach/and administrator with the Corpus Christi Ind. School District.

Justice of the peace courts have original jurisdiction in Class C misdemeanor criminal cases, which are less serious minor offenses. These courts also have jurisdiction of minor civil matters. A justice of the peace may issue search or arrest warrants, and may serve as the coroner in counties where there is no provision for a medical examiner. These courts also function as small claims courts. They also are referred to as the people's court.

The Precinct 2 boundary starts at Ocean Drive. and winds through Amistad, Sunset, Chamberlain, S. Staples, Annapolis, Norton, Naples, and Horn to Ayers and to State Highway 358. Down SH 358 to Everhart to the Oso Creek. It follows Oso Creek to FM 665 to County Road 54. From there it goes to the southern county line and over to the intercoastal waterway. It follows the intercoastal waterway to Corpus Christi Bay and back down Ocean Drive to Amistad.

My goal is to instill an unbiased and innovative office that shows respect to all parties. Prompt courteous service will be presented along with accurate and complete information. As your Justice of the Peace, I will use common sense dealing with all matters and will be fair to all involved participants.



Larry G. Cox
Republican

I am in my 4th term in this office. I have a BS in Criminal Justice. I have several hundred hours of instruction from the Texas Justice Court Training Center. I am currently the presiding Judge for the Nueces County JP's.

The justice court is often someone's first contact with the legal system. This is especially true with our youth. How a young person is dealt with within the legal system can have life-long effects. The justice court has original jurisdiction in eviction cases. This precinct has many rental properties. Truancy is a huge local problem. I have developed effective methods for dealing with truants. The justice of the peace has other various but important duties //

My precinct includes all of Flour Bluff and extends on the south side of SPID to Everhart. On the north side of SPID it extends west to Ayers and down Ocean Drive almost to Louisiana. The biggest issue I see is the truancy issue. It is imperative to keep students in school. This is really an area wide problem. It has been shown in many studies that keeping kids in school helps them succeed in life and also cuts down on crime.

I intend to continue working with school officials to develop strategies to keep kids in school. I want to work with county officials to make the office more efficient. Currently we cannot take credit cards for payment nor do we have an effective website. I think the public would be better served if these items could be put into place. A major priority is to keep the court's docket current. I know some courts have //

Republican Party Chairman, Nueces County

Questions posed to candidates and their responses. /// indicates a cut due to word limit.

Why are you running for this office? (40 words)

Describe your involvement and the contributions that you have made to your party. (75 words)

How will you foster cohesiveness in your party? (75 words)

What steps will you take to open better lines of communication with your precinct chairs? (75 words)



Mike Bergsma
Republican

I am a conservative who supports low taxation, restrained government spending, protecting the unborn, individual liberty and responsibility and a strong national defense. Today Washington endangers all of these. Local conservative leaders have asked me to lead the battle.

I have been involved with the Republican party my whole adult life, working in scores of political campaigns, ringing thousands of doorbells, making thousands of calls, and licking thousands of envelopes. I served as precinct chair from 1994-2009. I served two terms as Republican State Executive Committeeman, chairing the Resolutions Committee one term. In 2004, I organized the thriving Nueces County Republican Club. I have been heavily involved in fundraising, training and candidate recruitment.

The horror show in Washington has caused voters to recognize the danger to their economic future and political liberty from leftist government. The people are clearly aroused but we will only be effective against the liberals if we work together. I have worked hard meeting with conservative activists to listen to their concerns. I will continue to work tirelessly to elect the candidates that voters select in our primary.

Having served as a precinct chair for 15 years, I have a good understanding of the challenges our precinct chairs face. I would hold regular meetings of the precinct chairs and involve them in the strategic plans of the party. In the last year, I have organized two training sessions for our precinct chairs and campaign volunteers, and I plan to have many more of these in the future.

Republican Party Chairman, Nueces County (continued)

Questions posed to candidates and their responses. /// indicates a cut due to word limit.

Why are you running for this office? (40 words)

Describe your involvement and the contributions that you have made to your party. (75 words)

How will you foster cohesiveness in your party? (75 words)

What steps will you take to open better lines of communication with your precinct chairs? (75 words)



Ronald T. McLain
Republican

We need to restore integrity in our party. Strict adherence to the rule of law, including party rules, will foster a full and fair deliberative process. This has been missing. I want to reinstate fairness and integrity.

I have lived in Corpus for almost 2 years. The assaults on our liberties by Congress and the presidency motivate me. I have realized that we can all make a difference with local involvement. I have actively participated in Debra Medina's grass roots campaign here locally as well as the local liberty movement and the American Constitutionals. Additionally, I have recently become involved in the local 9.12 tea party movement.

Cohesiveness is a by-product of fair and equal participation. I will enforce respect for the rule of law, prevent exclusionary tactics and back room deals, restore fundamental Republican values, enabling unity and participation to thrive. Better communication and accountability also promotes cohesiveness. When the rules are followed, fairness abounds, encouraging participation. Fair participation leads to full and fair discussion in the deliberative process yielding the collective wisdom of the party. Let us bring integrity back.

Precinct chairs are the eyes and ears of the party. Holding regularly scheduled meetings will improve communication. Being receptive to ideas and encouraging full and fair participation will provide an avenue through which precinct chairs will feel comfortable providing input. I will encourage individual and independent thought and a forum within which to express them. When your voice matters, you are more apt to use it. Integrity will improve communication.

Democratic Party Chairman, Nueces County



Coretta Graham
Democrat

I am a candidate (no. 3 on the ballot) because I have the willingness, legal knowledge and experience to help my party with fundraising, communication and organizing. I helped to raise collectively 20-30K with other groups.

I have served as a precinct chair and election judge. I have participated in precinct, county, state and national conventions as a delegate or volunteer. At the county level, I have worked on the resolutions and nomination committees. I have been active with TDW coastal bend, Tejano Democrats, and Young Democrats. I have participated in Get Out The Vote and Fundraising efforts for the Nueces Democratic Party.

I would foster party unity through community projects, promoting democratic platform issues that relate to us locally, attendance at various democratic club meetings, quarterly party functions, and outreach to various party leaders and past party chairs.

To foster communication, I would promote precinct chair training and generate a party newsletter; I would attempt to meet with each precinct chair each year; I would utilize our party website and other social media; and I would invite precinct chairs to breakfast in addition to the statutory meetings.



Trina Garcia
Democrat

The main factor as to why I am running for the Democratic Chair is because of the love I have for the Democratic Party. I am confident that I can motivate and led the Democratic Party to victory in the November elections. I have the experience that is required to continue and surpass the success of the Democratic Party.

For more than twenty years, I have been active in the Democratic Party. I have worked at the "grassroots level" walking door to door, and phone banking on city, county, state, and national campaigns. I have been a precinct chair for more than six years and Election Judge concurrently. I have worked and organized voter drives, getting voters to come out and I am active in the Democratic organization locally educating others on the importance //

The way I plan to begin to bring the party together is to communicate, having worked in the communication business for more than twenty-four years, I have learned the art of listening and bringing people together, to do this we have to work as a team. We need to listen to one another, and close gaps within the party; by being an active County Democratic Chair, I can achieve this. I cannot do it alone. //

The first thing I would do is to get well acquainted with each of the precinct chairs and also the respective precinct. Making time to have one-to-one meetings and hearing their needs and what I can do to help them fulfill their duties. Secondly, I would have more meetings with the Executive Committee and getting feedback. Training is another factor, each precinct chair must be trained properly in knowing what their duties and responsibilities //



Rose Meza Harrison
Democrat

I was a successful Democratic Chair for San Pat County and believe I can do the same for Nueces County. I have the best training and skills necessary for uniting the party. I will be inclusive and not exclusive.

In the 90s I was a Democratic Precinct Chair for Nueces County and attended the County and State Conventions. I've assisted Democrats who were running for various positions in Nueces County as a blockwalker, phone banker, and poll assistant. While in law school I assisted judges with their campaigns including Tony Sanchez who ran for governor of Texas. Recently I was the San Pat County Democratic Chair who organized a very successful fundraiser.

To strengthen the Democratic Party in Nueces County I will hold monthly meetings and invite every Democrat in every Democratic organization where we will plan and organize to turn each precinct blue. I am not now nor will I ever be a member of any faction or click of the Democratic party. We need unity for party strength so my job will be to unite the Nueces County Democrats by being inclusive and not exclusive.

I will ask all precinct chairs to attend the monthly meetings. We will hold a 30 minute executive meeting prior to our general meetings where we will discuss my plan to turn each precinct blue. The plan will require the participation and reporting of each precinct chair.

Nueces County Mobile Early Voting Calendar

Sunday (domingo) February 14, 2010	Monday (lunes)	Tuesday (martes)	Wednesday (miércoles)	Thursday (jueves)	Friday (viernes)	Saturday (sábado)
20	19	18	17	16	15	14
<p>LA MICHOCANA BAKERY 3829 Crossbow Expy. 8:00 a.m. - 5:00 p.m.</p> <p>FREEDOM FITNESS 4939 S. Staples St. 8:00 a.m. - 5:00 p.m.</p> <p>CORPUS CHRISTI TRADE CENTER 2833 S.P.I.D. 9:00 a.m. - 5:00 p.m.</p> <p>GARDEN STATES RETIREMENT COMMUNITY CENTER 2769 Cimarron Blvd. 9:00 a.m. - 2:00 p.m.</p> <p>BANQUETE SENIOR CENTER 4359 4th St., Barquete, TX 8:00 a.m. - 2:00 p.m.</p>	<p>ONE SHORELINE PLAZA 500 N. Shoreline Blvd. 9:00 a.m. - 5:00 p.m.</p> <p>TEXAS A&M CORPUS CHRISTI 6300 Ocean Dr. 9:00 a.m. - 5:00 p.m.</p> <p>DRISCOLL CHILDREN'S HOSPITAL 3333 S. Alameda St. 9:00 a.m. - 5:00 p.m.</p> <p>Y.W.C.A. 4601 Corona Dr. 11:00 a.m. - 6:00 p.m.</p> <p>DAVID BERLANGA COMMUNITY CENTER 1513 2nd St., Agua Dulce, TX 8:00 a.m. - 5:00 p.m.</p>	<p>CHRISTUS SPOHN SHORELINE 600 Elizabeth St. 9:00 a.m. - 5:00 p.m.</p> <p>TEXAS A&M CORPUS CHRISTI 6300 Ocean Dr. 9:00 a.m. - 5:00 p.m.</p> <p>N.A.S. COMMISSARY 10801 D. St. Building 337 10:00 a.m. - 5:00 p.m.</p> <p>CITY OF CORPUS CHRISTI CITY HALL 1207 Leopard St. 9:00 a.m. - 5:00 p.m.</p> <p>DAVID BERLANGA COMMUNITY CENTER 1513 2nd St., Agua Dulce, TX 8:00 a.m. - 5:00 p.m.</p>	<p>CORPUS CHRISTI ATHLETIC CLUB 2101 Airline Rd. 9:00 a.m. - 6:00 p.m.</p> <p>CORPUS CHRISTI MEDICAL CENTER BAY AREA 7101 S.P.I.D. 9:00 a.m. - 5:00 p.m.</p> <p>DEL MAR COLLEGE-EAST 101 Baldwin Blvd. 9:00 a.m. - 4:00 p.m.</p> <p>MMHR OF NUECES COUNTY 1630 S. Browless St. 10:00 a.m. - 2:00 p.m.</p> <p>DRISCOLL ISD 410 W. Ave. D., Driscoll, TX 8:00 a.m. - 5:00 p.m.</p>	<p>SUN HARVEST 1440 Airline Rd. 9:00 a.m. - 6:00 p.m.</p> <p>ONEAL WILLIAMS SENIOR CENTER 1414 Martin Luther King Dr. 8:00 a.m. - 2:00 p.m.</p> <p>TRINITY TOWERS 101 N. Broadway St. 9:00 a.m. - 2:00 p.m.</p> <p>KIKO'S MEXICAN RESTAURANT 5514 Everhart Rd. 8:00 a.m. - 5:00 p.m.</p> <p>BANQUETE SENIOR CENTER 4359 4th St., Barquete, TX 8:00 a.m. - 5:00 p.m.</p>	<p>LINDALE SENIOR CENTER 3135 Sweimer Dr. 8:00 a.m. - 2:00 p.m.</p> <p>CAFE MAYA 2319 Morgan Ave. 4:00 p.m. - 8:00 p.m.</p> <p>SUTHERLANDS 4041 S. Staples St. 9:00 a.m. - 6:00 p.m.</p> <p>ROBSTOWN COMMUNITY CENTER 415 Marker Rd. 9:00 a.m. - 5:00 p.m.</p> <p>HOMEWOOD RESIDENCE RETIREMENT COMMUNITY 5410 Headavista Dr. 9:00 a.m. - 2:00 p.m.</p> <p>DAVID BERLANGA COMMUNITY CENTER 1513 2nd St., Agua Dulce, TX 8:00 a.m. - 5:00 p.m.</p>	<p>HALF PRICE BOOKS 5425 S.P.I.D. 9:00 a.m. - 5:00 p.m.</p> <p>FAMILY THRIFT 4801 Ayers St. 9:00 a.m. - 9:00 p.m.</p> <p>CORPUS CHRISTI TRADE CENTER 2833 S.P.I.D. 9:00 a.m. - 6:00 p.m.</p> <p>HOLLY PARK APTS 3339 Holly Rd. 9:00 a.m. - 2:00 p.m.</p> <p>DRISCOLL ISD 410 W. Ave. D., Driscoll, TX 8:00 a.m. - 5:00 p.m.</p>
<p>LA MICHOCANA BAKERY 3829 Crossbow Expy. 8:00 a.m. - 5:00 p.m.</p> <p>FREEDOM FITNESS 4939 S. Staples St. 8:00 a.m. - 5:00 p.m.</p> <p>CORPUS CHRISTI TRADE CENTER 2833 S.P.I.D. 9:00 a.m. - 5:00 p.m.</p> <p>GARDEN STATES RETIREMENT COMMUNITY CENTER 2769 Cimarron Blvd. 9:00 a.m. - 2:00 p.m.</p> <p>BANQUETE SENIOR CENTER 4359 4th St., Barquete, TX 8:00 a.m. - 2:00 p.m.</p>	<p>CORPUS CHRISTI MEDICAL DOCTORS REGIONAL 3315 S. Alameda St. 9:00 a.m. - 5:00 p.m.</p> <p>GARDEN SENIOR CENTER 5323 Geerly Dr. 8:00 p.m. - 5:00 p.m.</p> <p>TOWER II 355 N. Caracatus St. 9:00 a.m. - 5:00 p.m.</p> <p>CITY OF CORPUS CHRISTI CITY HALL 1201 Leopard St. 9:00 a.m. - 5:00 p.m.</p> <p>DRISCOLL ISD 410 W. Ave. D., Driscoll, TX 8:00 a.m. - 5:00 p.m.</p>	<p>CHRISTUS SPOHN RECREATION CENTER 3204 Highland Ave. 9:00 a.m. - 5:00 p.m.</p> <p>CENTER FOR ECONOMIC DEVELOPMENT DMC SOUTH 3209 S. Staples St. 9:00 a.m. - 5:00 p.m.</p> <p>CHRISTUS SPOHN MEMORIAL 2606 Hospital Blvd. 9:00 a.m. - 5:00 p.m.</p> <p>DEL MAR COLLEGE-WEST 4101 Old Brownsville Rd. 9:00 a.m. - 4:00 p.m.</p> <p>BANQUETE SENIOR CENTER 4359 4th St., Barquete, TX 8:00 a.m. - 5:00 p.m.</p>	<p>SOUTH TEXAS LIGHTHOUSE FOR THE BLIND 4421 Agnes St. 9:00 a.m. - 4:00 p.m.</p> <p>HI-HO RESTAURANT 3703 Morgan Ave. 7:00 a.m. - 2:00 p.m.</p> <p>CCAD 308 Cressy St. 8:00 a.m. - 5:00 p.m.</p> <p>WOOLDRIDGE PLACE 7352 Woodbridge Rd. 9:00 a.m. - 5:00 p.m.</p> <p>DAVID BERLANGA COMMUNITY CENTER 1513 2nd St., Agua Dulce, TX 8:00 a.m. - 5:00 p.m.</p>	<p>CORPUS CHRISTI MEDICAL TOWER 1521 S. Staples St. 8:00 a.m. - 5:00 p.m.</p> <p>AMERICAN BANK-ISLAND 14002 S.P.I.D. 9:00 a.m. - 4:00 p.m.</p> <p>CHRISTUS SPOHN SOUTH 5950 Saterlega Blvd. 9:00 a.m. - 5:00 p.m.</p> <p>FROST BANK 4215 S. Staples St. 9:00 a.m. - 5:00 p.m.</p> <p>DRISCOLL ISD 410 W. Ave. D., Driscoll, TX 8:00 a.m. - 5:00 p.m.</p>	<p>LINDALE SENIOR CENTER 3135 Sweimer Dr. 8:00 a.m. - 2:00 p.m.</p> <p>CAFE MAYA 2319 Morgan Ave. 4:00 p.m. - 8:00 p.m.</p> <p>SUTHERLANDS 4041 S. Staples St. 9:00 a.m. - 6:00 p.m.</p> <p>ROBSTOWN COMMUNITY CENTER 415 Marker Rd. 9:00 a.m. - 5:00 p.m.</p> <p>HOMEWOOD RESIDENCE RETIREMENT COMMUNITY 5410 Headavista Dr. 9:00 a.m. - 2:00 p.m.</p> <p>DAVID BERLANGA COMMUNITY CENTER 1513 2nd St., Agua Dulce, TX 8:00 a.m. - 5:00 p.m.</p>	<p>HALF PRICE BOOKS 5425 S.P.I.D. 9:00 a.m. - 5:00 p.m.</p> <p>FAMILY THRIFT 4801 Ayers St. 9:00 a.m. - 9:00 p.m.</p> <p>CORPUS CHRISTI TRADE CENTER 2833 S.P.I.D. 9:00 a.m. - 6:00 p.m.</p> <p>HOLLY PARK APTS 3339 Holly Rd. 9:00 a.m. - 2:00 p.m.</p> <p>DRISCOLL ISD 410 W. Ave. D., Driscoll, TX 8:00 a.m. - 5:00 p.m.</p>



League of Women Voters
--Corpus Christi Area
 PO Box 8276 • Corpus Christi, TX 78468
 361-880-6501
 www.lwv-cc.org

THANKS TO OUR SUPPORTERS:
 Corpus Christi American Federation of Teachers
 Local 3456; Corpus Christi Alumnae Chapter of
 Delta Sigma Theta; Port Industries; Citgo; and
 other friends of the League.

CANDIDATES LISTED ON THE DEMOCRATIC & REPUBLICAN PRIMARY BALLOTS

DEMOCRATIC BALLOT

U.S. Representative, District 27
 Solomon P. Ortiz

Governor
 Bill White
 Alma Ludivina Aguado
 Felix (Rodriguez) Alvarado
 Bill Dear
 Farouk Shami
 Clement E. Glenn
 Star Locke

Lieutenant Governor
 Ronnie Earle, Mark Katz,
 Linda Chavez-Thompson

Attorney General
 Barbara Ann Radnofsky

Commissioner of the General Land Office
 Hector Uribe
 Bill Burton

Commissioner of Agriculture
 Hank Gilbert
 Richard "Kinky" Friedman

Railroad Commissioner
 Jeff Weems

Justice, Supreme Court, Place 3
 Jim Sharp

Justice, Supreme Court Place 5
 Bill Moody

Justice, Supreme Court, Place 9
 Blake Bailey

Judge, Court of Criminal Appeals, Place 6
 Keith Hampton

State Representative, District 33
 Solomon Ortiz, Jr.

State Representative, District 34
 Abel Herrero

Justice, 13th Court of Appeals District, Place 3
 Linda Yañez

District Judge, 94th Judicial District
 Bobby Galvan

District Judge, 105th Judicial District
 J. Manuel Bañales

District Judge, 117th Judicial Dist.
 Sandra Watts

District Judge, 148th Judicial Dist.
 Marisela Saldaña

County Judge
 Juan Reyna, Clarissa Gonzalez

Judge, County Court at Law No. 1
 Robert J. Vargas

Judge, County Court at Law No. 2
 Lisa Gonzales

Judge, County Court at Law No. 3
 John B. Martinez

Judge, County Court at Law No. 4
 James "Jim" Klager

Judge, County Court at Law No. 5
 Terry Shamsie

District Clerk
 Patsy Perez, Sylvia T. Cueva

County Clerk
 Diana Barrera

County Commissioner, Precinct 2
 Gloria Caceres, Jesse Noyola,
 Joe A. Gonzalez (JAG)

Justice of the Peace, Precinct 1, Place 1 (Unexpired Term)
 Ray Madrigal
 Joe Benavides
 Larry Rucker Young
 Bea Molina
 Nick Adame

Justice of the Peace, Precinct 1, Place 2
 Henry A. Santana

Justice of the Peace, Precinct 1, Place 3
 Robert "Bobby" Balderas

Justice of the Peace, Precinct 3
 Adolfo G. Contreras
 Roberto R. "Beto" Gutierrez

Justice of the Peace, Precinct 5, Place 2
 Hermilo "Milo" Peña, Jr.

County Chairman
 Rose Meza Harrison
 Trina Garcia
 Coretta Graham

REPUBLICAN BALLOT

U.S. Representative, District 27
 R. Blake Farenthold
 William "Willie" Vaden
 Jessica Puente-Bradshaw
 James Duerr

Governor
 Rick Perry
 Kay Bailey Hutchison
 Debra Medina

Lieutenant Governor
 David Dewhurst

Attorney General
 Greg Abbott

Comptroller of Public Accounts
 Susan Combs
 Jerry Patterson

Commissioner of Agriculture
 Todd Staples

Railroad Commissioner
 Victor G. Carrillo
 David Porter

Justice, Supreme Court, Place 3
 Jeff Brown
 Rick Strange
 Debra Lehrmann
 Jim Moseley
 Rick Green
 Rebecca Simmons

Justice, Supreme Court Place 5
 Paul Green

Justice, Supreme Court, Place 9
 Rose Vela
 Eva Guzman

Judge, Court of Criminal Appeals, Place 2
 Lawrence "Larry" Meyers

Judge, Court of Criminal Appeals, Place 5
 Cheryl Johnson

Judge, Court of Criminal Appeals, Place 6
 Michael E. Keasler

State Representative, District 32
 Todd Hunter

State Representative, District 33
 Raul Torres
 Nicholas Rodriguez

State Representative, District 34
 Connie Scott

Justice, 13th Court of Appeals District, Place 3
 Greg Perkes

District Judge, 105th Judicial District
 Angelica Hernandez

District Judge, 148th Judicial District
 Guy Williams
 David Stith

Family District Judge, 319th Judicial District
 Tom Greenwell

County Judge
 Loyd Neal

Judge, County Court at Law No. 5
 Brent Chesney

County Commissioner, Precinct 4
 Chuck Cazalas
 Joe McComb

Justice of the Peace, Precinct No. 1, Place 1 (Unexpired Term)
 Amanda N. Torres

Justice of the Peace, Precinct 2, Place 2
 Jim Rector
 Larry G. Cox

Justice of the Peace, Precinct 4
 Duncan Neblett, Jr.

County Chairman
 Ronald T. McLain
 Michael Bergsma

CONTACT INFORMATION:

Nueces County Democratic Party: 361-882-8478

Nueces County Republican Party: 361-994-9317